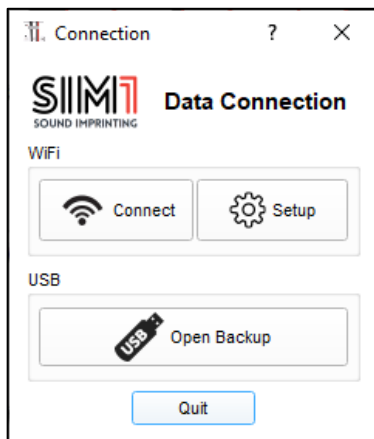


XT-1 CONFIGURATION MANAGER 4.0

Wi-Fi Setup for Real Time Editing

1) Wi-Fi Connection to the Pedal

- With the pedal off, insert the Dongle Wi-Fi USB Adapter (Edimax EW-7811UN* - separated accessory) in the USB port.
- Switch your XT-1 on. The dongle Wi-Fi will start to flash.
- Check the available Wi-Fi Networks on your Mac or PC and connect it to the "SIM1Hotspot", using the following password: 1234567890.
- Launch the Software Configuration Manager 4.0 that you previously installed in your Mac or PC.



- Click on "Connect" to load your XT-1 Configuration and start editing the sounds in Real Time.
- Click on "Setup" to configure the Wi-Fi Network. This allows to connect both, the Pedal and your Computer, to the same Wi-Fi network. They will be able to communicate one with each other, without losing the internet connection.
- Click on "Open Backup" if you wish to open any Backup Configuration (xt1.arc) without Real Time Editing.

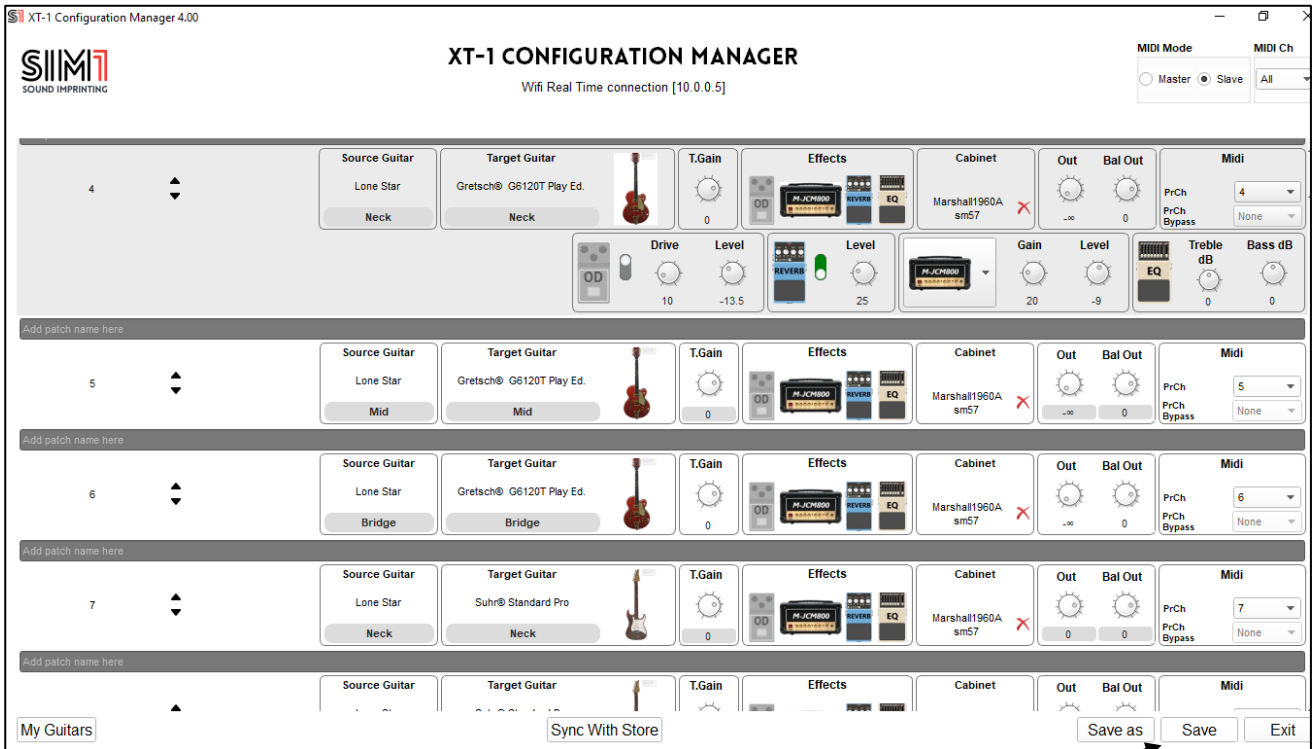
2) Wi-Fi Setup



- When connected to "SIM1 Hotspot", write name and password of your WI-FI home or office network.
- Click "Write configuration", the pedal will automatically reboot, and both devices will be connected to the same router. XT-1 will memorize this network and it will be automatically connected to it every time is nearby this Wi-Fi spot.
- Click on "Connect" to load your Configuration and start editing the sounds in Real Time.
- NB: When XT-1 is connected to your Wi-Fi Network, SIM1Hotspot is not visible anymore. Switch off your router and restart XT-1 if you wish to have a direct connection with XT-1.

* The Editor and XT-1 are configured to be used with this Dongle Wi-Fi model only

3) Edit your XT-1 Configuration



- Don't forget to save your new Configuration, otherwise the changes applied will be lost, when you switch the pedal off. By clicking on "Save" you will store your edits directly to the XT-1.
- By clicking on "Save as" you will be asked to rename and save a Backup file (.arc) in any folder you wish.